



42 Ryland Street Birmingham, B16 8BZ Offers Around £87,500

- GROUND FLOOR STUDIO APARTMENT
- ELECTRIC HEATING THROUGHOUT
- MODERN FITTED KITCHEN WITH APPLIANCES
- BATHROOM WITH SHOWER CUBICLE
- CLOSE TO LOCAL AMENITIES & BROAD STREET
- COMMUNAL COURTYARD AT THE REAR
- SECURE FOB ENTRY SYSTEM
- FOCUS ON ACHIEVING 99% VISIT [LOVEYOURPOSTCODE.COM](https://www.loveyourpostcode.com)
- MORE PHOTOS ONLINE AT [LOVEYOURPOSTCODE.COM](https://www.loveyourpostcode.com)
- SELLING? CALL US ON 0800 862 0871 FOR YOUR FREE VALUATION



Copyright 2018 Love Your Postcode Ltd. All rights reserved. This is a preliminary plan and should not be used for legal purposes. The plan is subject to change without notice.

42 Ryland Street, Birmingham, B16 8BZ

THIS STUDIO MAKES A GREAT PURCHASE. Pioneer Developments is situated on Ryland Street.

EWS1 GRANTED.

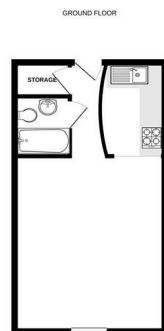
On offer is this fantastic, ground floor studio apartment at the luxury and most sought-after Jupiter Developments. Situated in Central Birmingham affording easy access to Birmingham's financial district, bars, restaurants and last but not least the social delights of Broad Street.

A GREAT INVESTMENT OPPORTUNITY WITH A TENANT IN SITU. The property comprises of an entrance hallway leading to the family bathroom and the main open plan studio space, featuring a large window that allows plenty of natural light to fill the living room. The kitchen is fitted with a range of floor based and wall mounted units and integrated appliances. The kitchen also has the benefit of being slightly partitioned off. The property is finished with laminate flooring and neutral decor throughout.

The apartment is within walking distance to many shopping amenities, cultural centres (e.g. theatres and concerts halls), some of the trendiest bars, restaurants, cafes and beautiful canals Birmingham has to offer. Despite all the above the building enjoys a quiet residential atmosphere. It is also equipped with central heating, double-glazing windows and overall high energy efficiency build. Perfect for any Investor or City Worker looking to reside this stunning central location.

Service Charge: £ 914.56/ per 6 months
Ground Rent: £150.00 / per year
Remaining Lease: 105 years
EPC : C

Open plan living area 22'9" x 11'5"
Shower Room 6'0" x 5'0"



PLEASE NOTE: THIS FLOOR PLAN IS A REPRESENTATION OF THE PROPOSED DEVELOPMENT AND IS NOT A CONTRACT. THE DEVELOPER ACCEPTS NO LIABILITY FOR ANY LOSS OR DAMAGE, INCLUDING BUT NOT LIMITED TO, LOSS OF PROFITS, ARISING FROM ANY RELIANCE ON THIS FLOOR PLAN. THE DEVELOPER ACCEPTS NO LIABILITY FOR ANY LOSS OR DAMAGE, INCLUDING BUT NOT LIMITED TO, LOSS OF PROFITS, ARISING FROM ANY RELIANCE ON THIS FLOOR PLAN.

Only those items mentioned within these particulars are included in the sale. All other items are excluded or may be negotiable with the vendor by separate agreement. Love Your Postcode has not tested any apparatus, equipment, fixtures, fittings or services and so cannot verify they are in working order, or fit for their purpose. The buyer is strongly advised to obtain verification from their solicitor or surveyor. Double glazing and central heating exists only where specified.

